

Powerful by nature.



**JETI**  
**CONDOR**  
RTR5200



Type	Roll-to-roll
Speed	→ → → → →
Width	Up to 528 cm – 208"
Colors	CMYK   Optional light cyan, light magenta, light black, white & clear fluid
Automation	Yes
Upgradable – speed	No
Upgradable – colors	Yes

With its impressive wingspan, the condor soars high above the landscape, gliding effortlessly for long distances with minimal energy. Take a bird's eye view on your wide-format business and let the 5-meter Condor roll-to-roll printer take you under its wings and guide you to new horizons.

**AGFA** 

# > A beast for every need

Whatever environment you operate in, whatever your markets or applications, whether seeking high productivity, quality, or versatility, we have the right beast for you. Our inkjet printers are powerful by nature, each with unique strengths built into its design. These beasts will deliver impressive results without compromise, boosting your business.

m<sup>2</sup>/h

ft<sup>2</sup>/h

printer speed

**7000**  
75 347  
SpeedSet Orca 1060 | sheetfed water-based inkjet printer →→→→→

**1500**  
16 146  
Onset Panthera FB3216 | flatbed →→→→

**1300**  
13 993  
Jeti Tauro H3300 | Hybrid →→→→

**JETI**  
**CONDOR**  
RTR5200



> Spread your wings



- 
- > Roll-to-roll
- > Up to 672 m<sup>2</sup>/h – 7,233 ft<sup>2</sup>/h
- > Up to 528 cm – 208"
- > Automatable
- > Upgradable colors
- > CMYK | Optional light cyan, light magenta, light black, white & clear fluid

**700**  
7 535  
**300**  
4 229  
Jeti Bronco H3300 | hybrid →→

Avinci CX3200 textile printer | roll-to-roll textile →→

Oberon RTR3300 | roll-to-roll →→

**200**  
2 153  
Anapurna Ciervo Family | hybrid →→

Anapurna RTR3200 | roll-to-roll →

**100**  
1 076  
Anapurna FB2540 | flatbed →

# > Why Agfa

## Inkjet experts

We are a leading company in imaging technology and IT solutions with over 150 years of experience. We have been developing and manufacturing state-of-the-art inkjet printing systems for over two decades, empowering print service providers to become both more versatile and efficient.

## Best cost of ownership

Inks, print heads, substrates, and color management software are perfectly tuned to each other to guarantee spot-on print quality, reliable production, low consumable usage and limited maintenance. In sum: we guarantee you the best possible cost of ownership.

## One-stop shop

Opt for peace of mind with a complete solution from a single supplier: printer, software, inks, service and support. We even offer attractive financing options.

## Spot-on inks

- > Large color gamut and high vibrancy
- > Low ink consumption thanks to Thin Ink Layer technology
- > Reliable jetting & batch-to-batch consistency
- > Resistant to wear and tear
- > Highly opaque white
- > Compliant with health & environment standards, including GREENGUARD Gold



## Asanti workflow & color management

- > Streamlines the printing process from prepress to production
- > Guarantees error-free job handling and consistent color reproduction
- > Parameter-based Calibrated Print Modes enable automatic job creation
- > Production Dashboard offers overview of job status, and ink and media consumption
- > Includes latest Adobe PDF Print Engine

More software options:

- > Asanti StoreFront  
cloud-based web-to-print solution
- > PrintSphere  
cloud-based file sharing
- > PrintTune  
print standardization

## World-class training and support

- > Expert support worldwide minimizes downtime with fast response times and remote troubleshooting capabilities
- > Comprehensive training during setup and production, tailored to your needs
- > Your feedback shapes our partnership



Find your local sales & support team: [www.agfa.com/printing/worldwide/](http://www.agfa.com/printing/worldwide/)



# > Why the Condor is the right beast for you

Boasting a maximum print width of 5.2 m and a max productivity of 672 m<sup>2</sup>/h, the Jeti Condor RTR5200 printer sets the industry standard in the roll-to-roll printer market.

- > The highest image quality at the highest rated speeds – native 7 pl drop reaching resolutions up to 1,200 dpi
- > Single roll-to-roll, free-fall, and dual/multi-roll (up to 3 rolls of 63")
- > Quick and easy media loading to handle a wide variety of flexible substrates
- > A wide array of design and application possibilities thanks to the clear fluid printing option and the superb white ink printing performance in single- and multi-layer print modes
- > Continuous printing with minimal supervision – also for backlit printing –using multiple media handling solutions for large and heavy rolls
- > Automated technology for printing mesh
- > Complete print-to-finished graphic workflow saves time, replaces expensive finishing equipment, limits operator intervention, prevents errors and increases yield
- > Low total cost of ownership (TCO) with low power consumption, low ink consumption, and optional tools that save waste, labor, floor space – and ultimately money

## High-value applications

The Condor printers are suited for a wide range of high-value applications.



### Multi-layer prints like day/night backlit graphics & banners

Using white ink and multi-layer printing, you can produce premium-margin backlit applications that will boost your bottom line. Produce stunning double-sided block-out banners to promote brands, store locations, sales and much more.

### Window & floor graphics

Use window film with an adhesive backing to create full-color graphics applied to the inside or outside of windows. Produce durable short-term or semi-permanent floor graphics for brand and product promotions and directional signage on flooring, tile, and carpets.

### Tradeshow and exhibition graphics

Create backlit graphics, banners, and booth backdrops on sturdy media that allows the graphics to pop, such as vinyl material, or soft banner material.

### Wallcoverings

Produce custom wallcoverings with exciting textures, eye-popping colors, and cool motifs, with white, clear fluid, and multi-layer printing on a wide range of materials. The inks are GREENGUARD Gold-certified, meeting the lowest total VOC emission levels for use in sensitive indoor environments.

### Building wraps

Building wraps can be used to cover up renovations and construction sites or as larger-than-life ads than can be seen from far away, promoting a company or upcoming event.

# > Condor printer models

Condor RTR5200 S	Condor RTR5200 HS
> Up to 479 m <sup>2</sup> /h	> Up to 672 m <sup>2</sup> /h
> 2 rows of colored printheads	> 3 rows of colored printheads

## Color options

In addition to the standard CMYK colors, the Condor roll-to-roll printers offer optional seven-color printing, white, and clear fluid, adding a wide range of high-margin applications to your portfolio.

### 7-color printing

The addition of light cyan, light magenta and light black achieves smooth gradient transitions and skin tones, crisp colors, and fine details. Based on existing printhead configuration, without adding more heads.

### White ink

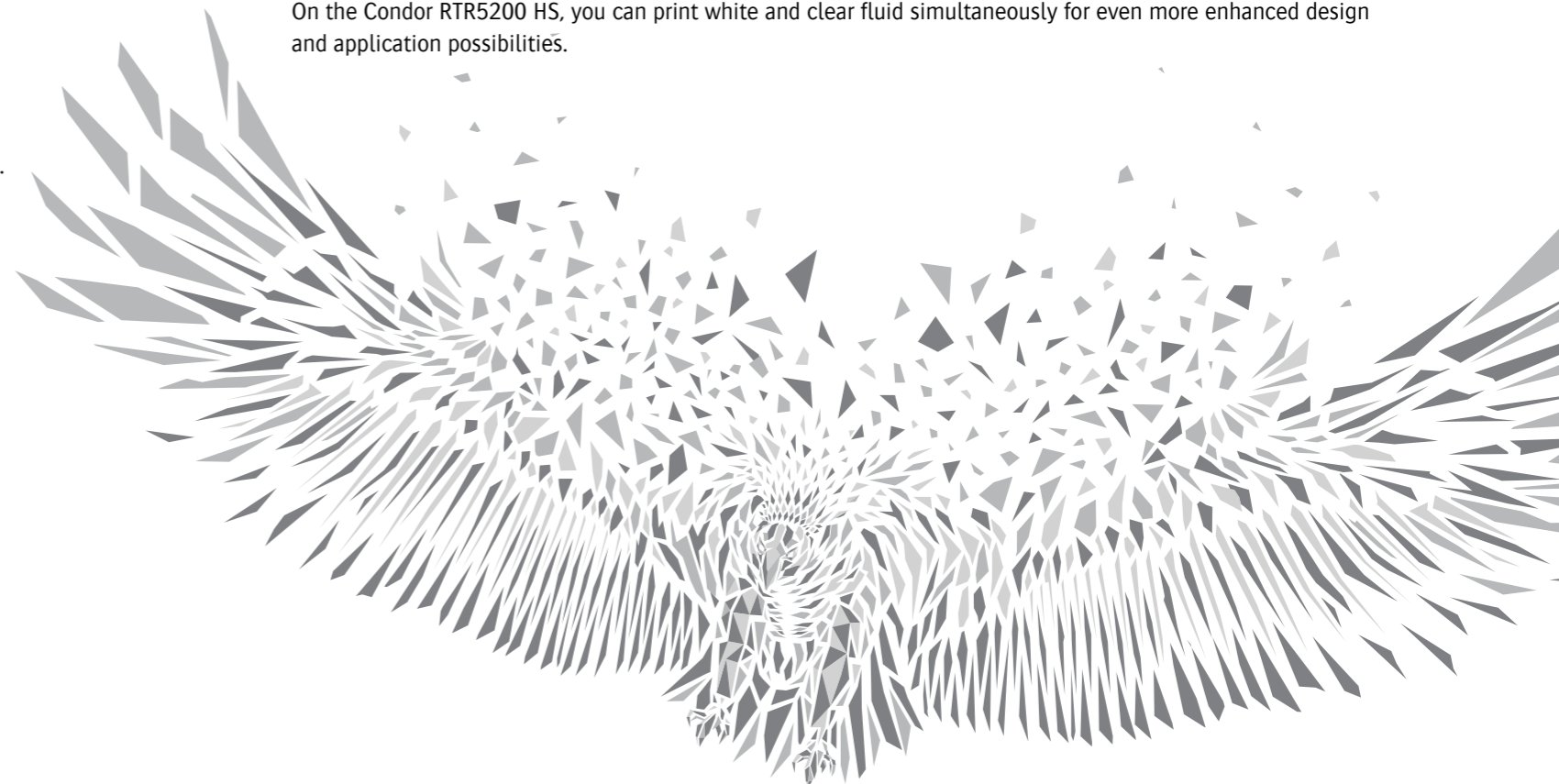
Superb white ink printing performance enables printing on colored and transparent media and opens up a myriad of creative possibilities. Multi-layer print modes for backlit applications and blockout printing.

### Clear fluid

The Anuvia 1480 clear fluid can be used for decorative applications as well as for a final protective coating. It prints inline, simultaneously with the image, saving time versus using a separate offline coating system. The clear fluid can be applied selectively or in full flood. There are gloss or matte finishes. Clear fluid provides up to three years protective coating and print enhancement.

### White and clear fluid together

On the Condor RTR5200 HS, you can print white and clear fluid simultaneously for even more enhanced design and application possibilities.



# > Soar to greater heights

Condor RTR5200

## > MAJESTIC FEATURES

### Continuous print

Media guides serve as an extra aid to keep warp-prone media flat at all times. They are easy to access and change in view of the required media thickness and width.

### High-quality imaging

Piezo drop-on-demand inkjet technology with 7 pl printheads for up to 1200 dpi true resolution.

### Industry-leading LED technology

Extend your range of supported substrates, increase uptime, reduce operating costs, and move towards more sustainable production with low VOCs, lower energy consumption, and less waste and consumables.

### Productive roll-to-roll printing

Quick and easy media loading that handles a wide variety of flexible substrates. Roll-to-roll, free-fall, dual- and multi-roll (up to 3 rolls of 63").

### Media Saving Wizard

Automatically prints a label on the edge of the roll, indicating the remaining media length, to improve media stock management.

### Media collection kit

A set of accessories that facilitate neat media feeding/collecting, holding in place media rolls positioned directly on the rear or front of the printer to prevent them from shifting sideways



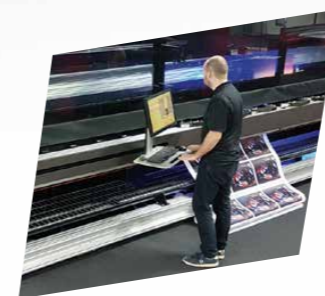
### Media spreaders

A pair of clamp-like devices that stretch the media sideways to enable neat media inlet to the printer. For extra challenging, stretchable media types that tend to wrinkle.



### Mobile operator station

With touch screen for maximum convenience

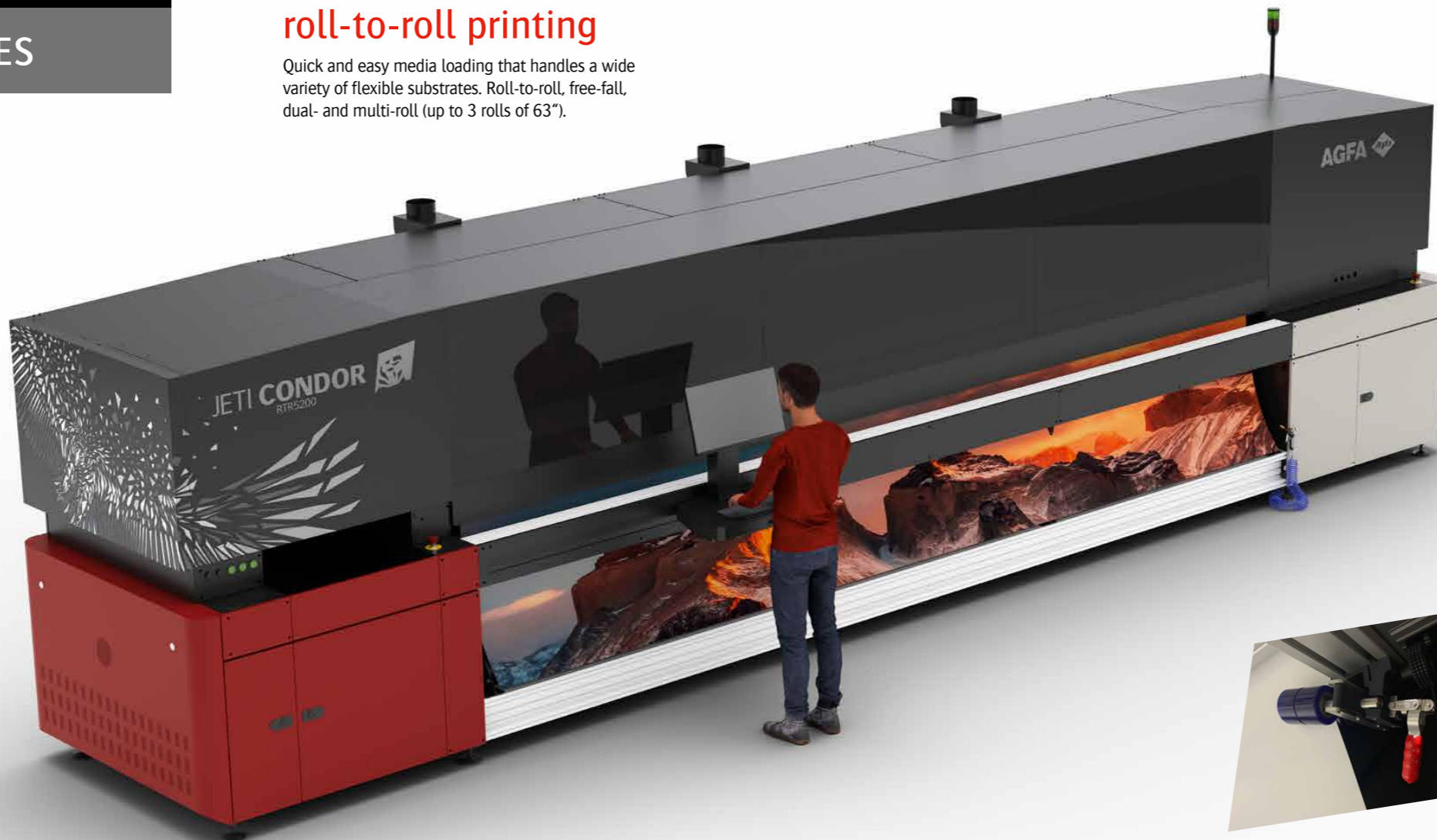


### Integrated mesh kit

With the integrated mesh printing feature you can print on mesh and other porous substrates without soiling your printer and media. At the push of a button, a set of integrated mesh wings unfolds, and the printer is instantly ready for mesh printing.

### Wrinkle analyzer

Prevents head strikes caused by media wrinkles. Saves time and money and enables the use of low-cost media.



# > Tools to boost your capabilities and profits

The Condor features a unique collection of value-added options that transform them into all-in-one, multi-purpose platforms that automate processes, minimize waste, increase usability, expand your applications offering, and enhance profit.

## Inline finishing

Automates the complete printing and finishing process on the fly and in a single system.

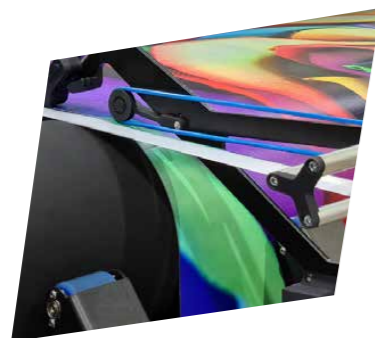
### BENEFITS

- > Saves valuable time and eliminates bottlenecks at finishing stations
- > Replaces additional expensive finishing equipment and saves valuable floor space
- > Ensures perfect print quality with minimal operator intervention
- > Prevents finishing, shipping, and installation errors
- > Increases yield



### ID backprint

For printing customer information on the rear of the media; also available with white ink for color-backed media. Facilitates the identification of the finished job for packing, shipping and installation.



### Y-slitters

For the vertical trimming of margins or slitting media into multiple jobs, minimizing media waste and increasing the printing area. With waste collectors. Single- or double-bladed.

### X-cutter

Cuts media on the X-axis on the fly, without slowing down printing.

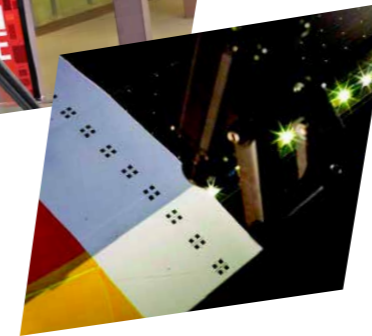


## Double-sided printing



### Automatic blackout

Optical sensor that enables automated printing on both sides of opaque blackout media with excellent registration. Supports cutting and slitting.



### Automatic backlit

Uses cameras, a LED strip and software to enable printing each side with a different print mode. Accuracy of 2 mm over 10 linear meters.

## Media handling



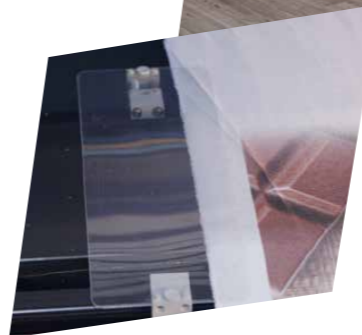
### Master Roll-to-Roll unit

For loading heavy media rolls increases productivity in high-volume runs due to less make-ready. Enables continuous, unattended work.



### Motorized inflatable air shafts

For precise media collection of larger and heavier rolls up to 400 kg. Supports full printer width media & multi-roll.



### Media edge guards

For media with uneven or wavy edges protect the print carriage and printheads, preventing waste media.

## Software

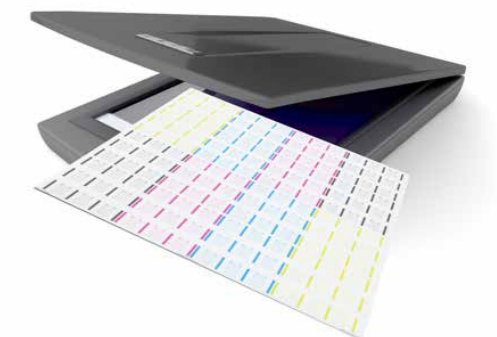
### Quality maintenance kit\*

Software and a dedicated scanner enable you to self-diagnose and fix print quality issues, including calibration or missing nozzles. This will increase your uptime and extend the printhead lifespan.

### Automatic calibration\*

Gets the printer it to its optimal print quality state. Can be performed every few months by a skilled onsite operator.

\* Only available on the Condor RTR5200 HS





> Spread your wings

# > Explore new horizons

## Specifications Jeti Condor RTR5200

MODELS	JETI CONDOR RTR5200 S	JETI CONDOR RTR5200 HS
	4C – CMYK (16 print heads ) Options: - 7-color set-up - White (+ 4 printheads)* - Clear fluid (+2 printheads)* * White & clear fluid cannot be combined	4C – CMYK (24 print heads) Options: - 7-color set-up - White (+ 4 printheads) - Clear fluid (+2 printheads)
<b>PRODUCTIVITY</b>	Up to 479 m <sup>2</sup> /h (5,156 ft <sup>2</sup> /h)	Up to 672 m <sup>2</sup> /h (7,233 ft <sup>2</sup> /h)
<b>MEDIA &amp; PRINTING SPECIFICATIONS – ROLL-TO-ROLL</b>		
<b>Maximum media width</b>	530 cm (209")	
<b>Maximum print width</b>	520 cm (208")	
<b>Maximum length</b>	Full roll length (depends on total roll thickness, diameter and weight)	
<b>Thickness</b>	Maximum 30 mm	
<b>Maximum weight</b>	225 kg (496 lb) 400 kg (882 lb) with motorized inflatable air shafts 793 kg (1,748 lb) with Master Roll-to-Roll unit	
<b>Maximum roll diameter</b>	External: 50 cm (19") Master Roll-to-Roll: 70 cm (27.5")	
<b>Roll mounting</b>	Pneumatic shafts for cores of 76.2 mm (3") (standard) and standard adaptors for 6" cores, and 152.4 mm (6") (optional) for Master Roll-to-Roll.	
<b>Borderless printing flexible media</b>	Yes	
<b>APPLICATIONS</b>		
<b>Media types</b>	Handles a wide variety of flexible substrates. Check with your local Agfa representative for a detailed list.	
<b>PRINT HEADS &amp; INKS</b>		
<b>Print heads</b>	Piezo drop-on-demand inkjet technology 18 print heads with 7 pl printheads	Piezo drop-on-demand inkjet technology 24 print heads with 7 pl printheads
<b>Ink</b>	Anuvia 1480 RTR inks CMYK + optional lights (cmk), white and clear fluid	
<b>Ink container volume</b>	5 liters	
<b>IMAGE &amp; TEXT QUALITY</b>		
<b>Image quality</b>	Up to 1 200 dpi true resolution	
<b>Text quality</b>	3 point	
<b>ROOM CONDITIONS</b>		
<b>Temperature</b>	20-30°C (68-86°F)	
<b>Relative humidity</b>	Standard range: 30% - 80% (non-condensing) Optimal range: 50% - 80% (non-condensing)	
<b>SYSTEM INTEGRATION RIP/WORKFLOW SOFTWARE</b>		
	Asanti, StoreFront, PrintSphere, third-party RIPs	

> Get a demo or print sample pack!

